

ANNUAL GENERAL MEETINGS

15 – 17 MAY 2018

RUSU
RMIT UNIVERSITY STUDENT UNION

A Message from the 2018 RUSU President

2017. What a year! RUSU is so proud of the progress we have made throughout the year and the continued hard work of our student representatives, team of staff and our RUSU volunteers.

For RUSU, this was the year of the 'launch celebrations'. We:

- opened new Compass (Welfare) Drop In Centres (and food banks) at City and Brunswick campuses,
- designed and delivered new Queer and Women's rooms in the City,
- opened a new purpose-built Realfoods Café, Student Activity Space and RUSU Central information counter in New Academic Street (City), and
- released the new RUSU website.

Our existing programs have gone from strength to strength and there have been many creative new initiatives and events such as; RUSH Week, Winter Wonderland Event, Brunswick Networking Gala, Compass Market Places, Welfare on Wheels, Point Cook program and Postgraduate Sit and Write sessions.

RUSU has been an active voice for students at RMIT, through our student representatives, our advocacy staff and through the leadership training and support provided to the many Staff Student Consultative Committee (SSCC) student representatives at RMIT. Behind the scenes we worked with RMIT on our RUSU Top 20 Priorities including; campaigning for a more mental health friendly campus, Equitable Learning Services (ELS) and accessibility improvements, more transparent complaints handling processes and improved campus facilities. RUSU was heavily involved in the Respect Now Always campaign and in advocating for action on sexual assault and harassment on campus.

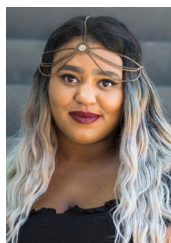
Our free food and entertainment continues to be loved by students. We've served around 60,000 free lunches and 65,000 serves of free breakfasts and provided 9,000 serves of snacks in RMIT libraries through the Welfare on Wheels Trolley and Exam Support Stalls.

RUSU clubs created a sense of belonging and contributed to the student experience at RMIT. RUSU supported them with \$154,000 in club grants.

RUSU volunteers contributed over 4,500 hours to RUSU events and services last year. A big thank you goes out to the 27 elected student representatives and our RUSU volunteers.

Quarterly reports are available online for more detailed information on the past and current activities of your Student Union at <http://www.rusu.rmit.edu.au/quarterlyreports>.

Abena Dove
President, RMIT University Student Union



ABENA DOVE

RUSU Financial Update

Your student fees at work @ RUSU

RMIT University charges students an annual Student Services and Amenities Fee (SSAF). This fee is collected by RMIT University to fund student services and amenities of a non-academic nature. Funding is distributed between a range of service areas and providers at the University, including RUSU.

In 2017 RUSU received a total of \$3,586,850 in SSAF fees through RMIT. \$881,500 of this funding was in special SSAF Committee grants to provide a wide range of services and events run by students, for students (e.g. free breakfasts, campus events, English language workshops, RMITV programs and training, orientation events and specialist support for vocational education and postgraduate students.) All of these funds were spent on the 19 areas permitted by the SSAF legislation (Allowable Items).

RUSU SSAF Funding 2017

RUSU Funding from RMIT for 2017 was made up of the following:

(Base grant)	\$2,705,350
(SSAF Committee grants)	\$881,500
2017 TOTAL GRANT	\$3,586,850

Additional sources of RUSU income include: investment income, 2017 financial memberships, Realfoods Cafe revenue, event ticket sales and student media advertising.

The 2017 grant from RMIT was received as a lump sum payment in late January. This upfront payment enabled RUSU to maximise opportunities to generate additional income through strategic investments. RUSU engaged Advisersure as investment advisors to assist with the management of our investments in accordance with the approved RUSU Financial Investment Strategy.

Finance Summary 2017

Total Revenue in 2017:	\$4,045,314
Total Expenses in 2017:	\$4,116,734
Other comprehensive income for the year:	\$80,776
Total comprehensive income/(loss):	\$9,356

The financial audit for financial year 1 January to 31 December 2017 was conducted by independent auditors BDO and will be presented at the Annual General Meeting on each campus

**JOIN
RUSU**

Not a RUSU Member yet?

2018 RUSU Membership now on sale for only \$10

RUSU HIGHLIGHTS 2017

RUSU Clubs

- RUSU Clubs accessed \$154,000 in Clubs Grants
- We supported 105+ RUSU Clubs (estimated 10,000+ members)

RUSU likes to Party

- RUSU major events included; Orientation events, Welcome Bash, 2 Boat Parties (Hero's and Villains and PJ Party), Storey Hall Toga Party*, RUSH Week*, End of Exams Parties (Post-Apocalyptic and RMIT Roof Top Party*), Pub Crawls, Winter Wonderland* (mid-year Orientation), Mooncake Festival, Clubs Trivia Night, Pop up Pubs and more.
- Brunswick Special Events including; Networking Gala in Brunswick Activity space*, Open Air Cinema, Brunswick Denim on Denim Pub Crawl*.
- Bundoora Special Events including; Open Air Cinema, Bundie Games Week, Walert House Events.



RUSU – Free Weekly Lunches

- RUSU's weekly lunches delivered 60,000 serves of free lunches across the campuses. In 2017 we moved from vegetarian to vegan options.
- Themed events included; Oktoberfest, International Chill & Grill, Indigenous themed Chill and Grill* (featuring Philly), Super Chill and Grills (featuring Cable Ties, Kooyeh), Tacos, ice cream trucks (4,000 free ice creams!).



New initiatives

- Loads of new initiatives including; RUSH Week, Postgraduate Sit and Write session, lunch time Wellness Workshops (all campuses), RUSU managed Student Activity Space launched and available for student events, Brunswick Maker's Markets, new RUSU website launched (plus all events marked * are new initiatives).
- RUSU started delivering lunch events and outreach at Point Cook campus.

Free Healthy Breakfasts and Welfare on Wheels

- 65,000 free & healthy breakfasts provided across the campuses
- Welfare on Wheels* provided free snacks in the City library on Wednesday evenings (6,000 serves plus 3,000 serves during the Exam Survival Library Stalls* in week 13)



RUSU Realfoods

- RUSU Realfoods provided yummy, healthy, vegan food options and barista made fairtrade coffee.
- The new Realfoods Café opened in New Academic Street (City Campus)



RUSU Financial Membership

- 4,822 students joined as RUSU financial members in 2017

RUSU Volunteers & Student Employment

- RUSU volunteers contributed a grand total of 4,521 hours of volunteer work.
- Provided 260 RMIT students with accredited training in Food handling, RSA or YMHFA.
- 20 RMIT students employed as RUSU student casuals (Info Counters, Events and Realfoods).

RUSU's Advocacy and Student Rights

- Our 6 Student Rights Officers provided individual casework advocacy support for 940 new student cases and contributed to improving RMIT policies and procedures.
- RUSU student reps provided a student voice on 78 student appeals and hearings.



Compass

- Compass provided information, referral, support (including free food bank) and outreach at City campus and opened new services at Bundoora and Brunswick.
- New Compass Drop in Centres opened in NAS (City) and Brunswick
- Students accessed welfare information and support through outreach programs (E.g. Stress Less Week, Wellness Workshops, R u Ok Day, Chill out Zones*, Compass Market Place* (free food, info and recipes))



Student Media

- RMITV celebrated 30 years in 2017. They continued to provide high quality training and production experience to RMIT students, with strong industry engagement and pathways to industry employment.
- Catalyst published 5 student magazines and produced podcasts and website content (<http://www.rmitcatalyst.com/>)



Representation & Campaigns

- RUSU Top 20 Priorities Campaign created change on campus, both in better facilities and the involvement of RUSU in successfully advocating for more student friendly policies.
- RUSU's Queer, Womens, Sustainability, International, Education, Welfare and Postgraduate departments contributed to student life through regular events, conferences, activities and campaigns.
- RUSU created a new Indigenous department and position of Indigenous Officer on the Student Union Council
- Leadership training and networking program provided for Staff Student Consultative Committee (SSCC) representatives.
- New RUSU Womens and Queer rooms opened on City campus.